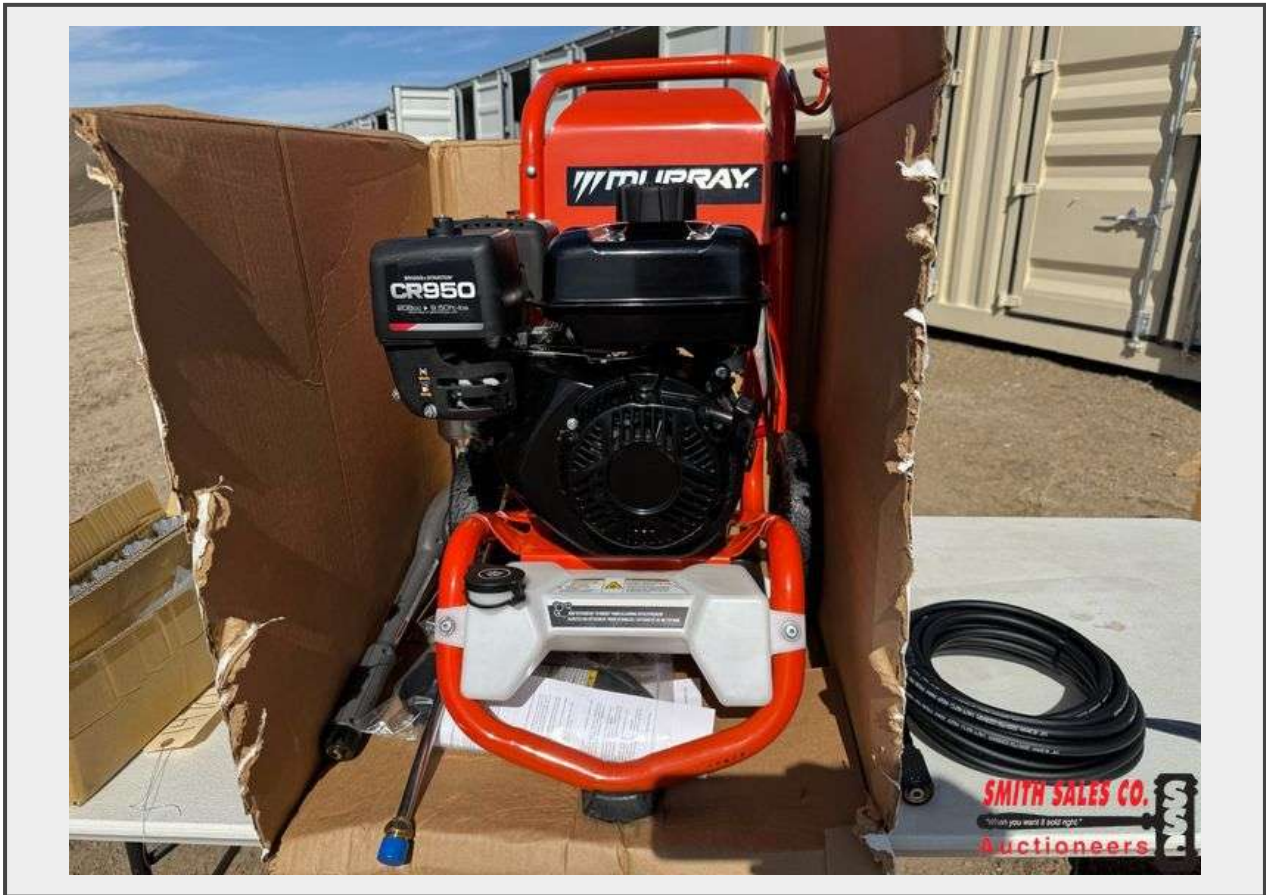


Sale Name: 25th Spring Fever Machinery & More Auction

LOT 1477 - Unused Murray Pressure Washer 3200 PSI



Description

Factory Reconditioned Pressure Washer

3200 MAX PSI, 2.5 MAX GPM* CARB Compliant

0° 3200 PSI, 2.4 GPM | 15° 3000 PSI, 2.5 GPM | 25° 3000 PSI, 2.5 GPM | 40° 3000 PSI, 2.5 GPM | SOAP

Gas Pressure Washer with Briggs & Stratton® 208cc Engine

- Briggs & Stratton CR950 Series* engine, 208cc
- On-board detergent tank
- Low oil shutdown technology
- 7-in-1 nozzle with second story reach
- 30' high-pressure flexible hose
-

Quantity: 1



<https://www.smithsalesco.com/>